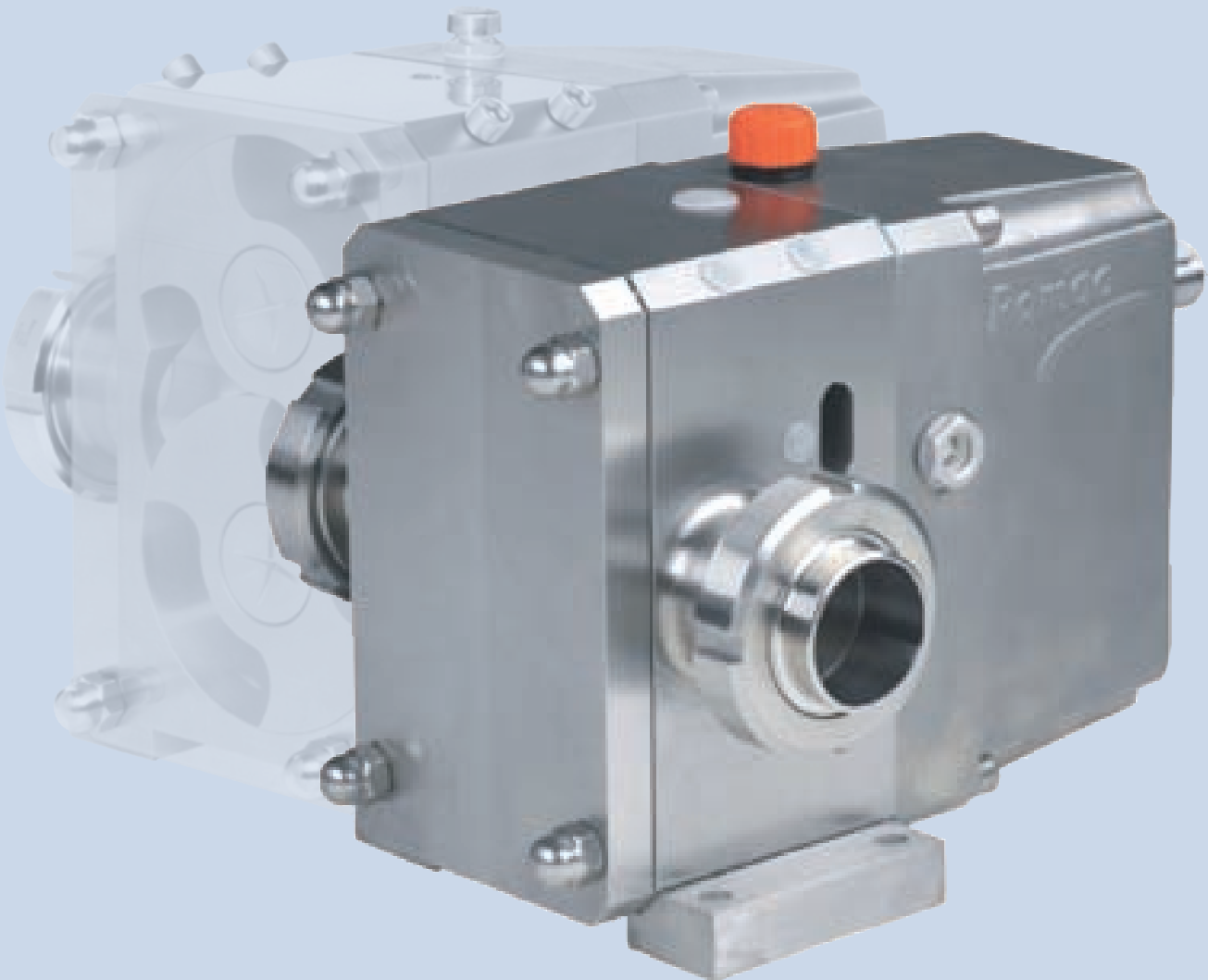




Pomac pumper / *Pomac pumps*



Pomac Pumps

Scanding
FLOW TECHNOLOGY AND EQUIPMENT

PLP - Lobe pompe / *PLP - Lobe pumps*

PLP - Lobe pompe / *PLP - Lobe pumps:*

■ Lobe pumpen fra Pomac er designet til at yde maksimal pumpeeffekt med minimal skade på mediet. Det gør den meget anvendelig i fødevarerindustrien, samt i den kosmetiske industri, hvor viskositeten kan være af meget forskellig karakter. Pumpen er meget rengøringsvenlig.

■ *Pomac Lobe pumps are designed to achieve maximum pump performance combined with minimal product damage. It makes it very usable in the food industry, and in cosmetic industry, where the type of media can have different viscosity liquids. The pump can easily be cleaned.*

Specifikationer / *Specifications:*

- Designtryk op til 15 bar
- Kapasitet op til 110 m³/h.
- Fremstillet af Aisi 316
- Pakningstype: enkelt eller dobbelt mekanisk akseltætning, alt afhængig af medie
- Horizontal- eller vertikal montering (selvtømning)
- Tilslutninger: union, clamps, flanger
- Kan leveres med overtryksventil og varmelegeme

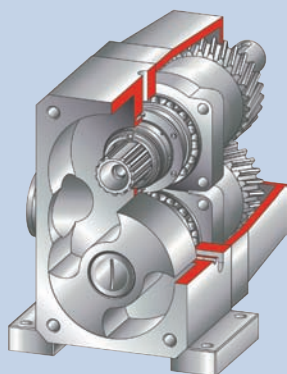
- *Working pressure up to 15 bar*
- *Flow: up to 110 m³/h*
- *Made entirely of Aisi 316*
- *Shaft sealing: Mechanical seal according to products*
- *Horizontal as well of vertical position (self-draining)*
- *Connections: union, clamps, flanges*
- *The pump can be fitted with a pressure relief valve and a heating jacket*



Anvendelsesmuligheder / *Applications:*

- Mejerier: yoghurt, creme, smør, koaguleret mælk
- Bagerier: dej, fedt, creme, remons
- Drikkevarer: øl, juice, limonade
- Kosmetiske produkter: creme, shampoo, balsam
- Slagterier: Hakket kød, ekstrakter, dyrefoder
- Ægproduktion: æggehvitestof, blommer
- Viskous produkter: salater, sovse, supper, glykose sirup, chokolade
- Stivelses produkter: Kartoffelmos
- Kemisk industri

- *Dairy products: yoghurt, custard, butter, curdled milk*
- *Bakery: Dough, fat, paste, fondant, creams*
- *Beverages: beer, fruit juice, lemonade*
- *Cosmetic products: cream, shampoo, etc.*
- *Meat products: chopped meat, extracts, animal food*
- *Egg products: albumen, yolk*
- *Viscous products: sauces, salads, soups, glucose syrup, chocolate*
- *Starch products: mashed potatoes*
- *Chemical industry*



Teknisk data / *Technical data:*

Type	displacement [Liters/100rev]	max. press. [bar]	max speed [rev/min]	weight [kg]
PLP 1-3/4	4,2	15	1000	12
PLP 1-1	6	15	1000	12,5
PLP 1-1,5	10	10	1000	14
PLP 2-1,5	22	15	1000	37
PLP 2-2	30	15	1000	39
PLP 2-2,5	36	10	1000	44
PLP 3-2	55	15	750	101
PLP 3-3	100	15	750	105
PLP 3-4	130	10	750	115
PLP 4-4	250	15	750	295

CP - Centrifugalpumper / CP - Centrifugal pumps

CP - CP/ZA - ZA / CP - CP/ZA - ZA

■ Pumperne er karakteriserede ved en optimal hydraulisk ydeevne, en unik modulopbygget konstruktion og et stort udvalg af akseltætninger. Pumperne er konstrueret i henhold til EHEDG-standarder, hvilket gør at pumperne opfylder selv de strengeste hygiejnekrav. Pumperne leveres selvansugende og ikke-selvansugende.

■ *The pumps are characterised by an optimal hydraulic performance, a unique modular designed construction and an ample choice of possible shaft sealings. The construction of the pumps is in accordance with EHEDG standards. This makes the pumps meeting even the severest hygienic requirements of food industry. The pumps are available in self-priming as well as in non self-priming execution.*



Specifikationer / Specifications:

- Designtryk op til 13 bar
- Kapacitet up til 300m³/h
- Produktberørte dele Aisi 316L eller bedre
- Standard udførelse med lodret afkast for tryk op til 16 bar
- Højtryks udførelse for tryk op til 50 bar
- Med studse for direkte indbygning i rørsystemer
- Som pumpe for medier med blødt indhold, f.eks. koaguleret mælk
- En udførelse med radial afkast placeret i center over pumpen

- Working pressure up to 13 bar
- Flow up to 300m³/h
- In touch with media Aisi 316L or a higher degree
- Standard execution with tangential exhaust for pressures up to 16 bar
- A high-pressure execution for pressure up to 50 bar
- With in-line suction and delivery ports, to be fitted directly into the pipeline
- A curdled milk pump, to pump curdled milk and other similar products that have soft and delicate particles.
- An execution with radial exhaust, situated above the centerline of the pump



CP - Sanitær rustfri stål centrifugal pumpe / CP - Sanitary stainless steel centrifugal pump

■ Pumpen er designet til at pumpe væsker med viskositet op til 500 cP uden ændring i sugeævn. Pumpen leveres med en kapacitet op til 300m³/h og med et tryk op til 13 bar. Afhængig af mediet kan pumpen leveres med lukket, halvt åben og åben impeller.

■ *The sanitary pump is designed to handle liquids with viscosities up to 500 cP without reducing suction capacity. The flow rates is up to 300m³/h with manometric head up to 13 bar. Depending on the product to be pumped, the pumps can be supplied with closed, half open or open impeller.*

CP/ZA - Selvansugende rustfri centrifugalpumpe / CP/ZA - Stainless steel self priming centrifugal pump

- Pumpen har samme egenskaber som type CP, men er selvansugende, hvilket gør den særlig egnet til at pumpe medier der indeholder luft og gasser. Ved at anvende åben impeller er det også muligt at pumpe medier med indhold af tørstof.
- Pumpen leveres med en kapacitet op til 200m³/h og med et tryk op til 9 bar.

■ *This pump type is an extension of the CP-program. It is charactered by its self priming capacities, which makes this pump type ideally suited for pumping liquids with enclosed air or gasses. By using the open impeller it is also possible to pump liquids containig solids. Flow rates upto 200 m³/h with manometric heads upto 9 bar.*

■ *These pump types have a high degree of interchangeability with CP pumps.*



ZA - Sidekanalspumpe i rustfrit stål / ZA - Stainless steel side channel pump

- Pumpen er selvansugende og fungerer efter væske ring-princippet, hvilket gør den egnet til medier indeholdende luft og gasser.
- Kapacitet op til 60 m³/h og et tryk på 5 bar.

■ *These self priming pumps are functioning according to the liquid ring-principle which enables them to pump liquids with enclosed air or gasses.*

■ *Flow rates up to 60m³/h with manometric heads upto 5 bar.*



PS - Pumpe for stivelse / *PS - Pumps for starch*

PS - Pumpe for stivelsesholdige produkter / *PS - Pumpe for starch production process*

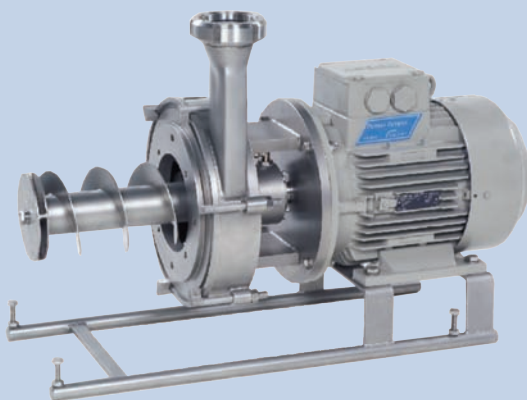
- Serien repræsenterer komplet sortiment af pumper for produktionsprocesser for stivelse. Programmet omfatter de nødvendige pumpeformer for alle opgaver under de forskellige stadier af stivelsesproduktion. Disse rustfrit stål pumper er karakteriseret ved deres optimale hydrauliske præstationer, men også af deres enestående, modulopbygget designet og et rigelig udvalg af mulige akseltætnings materialer.
- *The series represents the complete range of duty pumps for starch production processes. The programme comprises the necessary pump types for all duties during the different stages of the starch production process. These smooth finished stainless steel pumps are characterized by their optimal hydraulic performance, but also by their unique, modular designed construction and an ample choice of possible shaft sealing materials.*

Specifikationer / *Specifications:*

- Designtryk op til max 0,3 / 4 bar
 - Kapacitet op til 60 / 70 m³/h.
 - Mediebert materiale fremstilles af Aisi 316
 - Tilslutninger: Union, clamps, flanger
 - Akseltætning: Dobbel mekanisk tætning
- *Working pressure up to max 0,3 / 4 bar*
 - *Flow: up to 60 / 70 m³/h*
 - *In touch with media Aisi 316*
 - *Connections: union, clamps, flanges*
 - *The shaft is sealed by means of a double mechanical seal*

PSSP - Pumpe beregnet til skummende slam / *PSSP - Pumps for foaming slurries*

- Pumpen er velegnet til at pumpe skumdannende slam under stivelsesproduktion. En særlig indvendig konstruktion gør det muligt at transportere slam der indeholder luft eller er skumdannende.
 - Kapacitet op til 60 m³/h ved 0,8 bar.
- *The pump is suitable for pumping sludge foaming during starch production process. A special interior design make it possible to transport the sludge containing air or foaming.*
 - *Capacitet up to 60 m³/h at 0,8 bar.*



PSVP - Pumpe beregnet til fiberholdige produkter / *PSVP - Pumps for fibrous slurries*

- Pumpen er i stand til at pumpe det fiberholdige slam via den specielle snegl.
 - Kapacitet op til 60 m³/h ved 0,3 bar.
- *The pump is able to pump the fibrous sludge from the special snail.*
 - *Capacitet up to 60 m³/h at 0,8 bar.*



PSCP - Centrifugal pumpe / *PSCP - Centrifugal pumps*

- Anvendes til at pumpe det delvis afskummede stivelse.
 - Kapacitet op til 70 m³/h ved 4 bar.
- *Used to pump the partially de-foamed starch milk.*
 - *Capacitet up to 70 m³/h at 4 bar.*

TP - Hygiejnisk tankbil pumpe / *TP - Hygienic truck pumps*

TP - Hygiejnisk tankbil pumpe / *TP - Hygienic truck pumps*

■ Sortimentet af tankbil pumper omhandler en serie af specielle versioner af CP, CP/ZA, og ZA centrifugalpumper i rustfrit stål. De bliver drevet hydragisk men kan også leveres med el-motor.

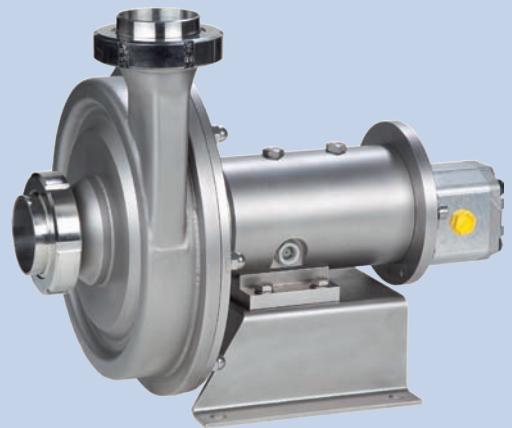
■ *The range of truck pumps covers a series of special versions of CP, CP / ZA, and ZA stainless steel centrifugal pumps. They are driven hydragisk but can also be supplied with an electric drive.*

CP-IGH - Centrifugal pump / *CP-IGH - Centrifugal pump*

- Pumpen er velegnet til pumpning af væsker med en viskositet op til 300cP. Afhængigt af produktet kan pumpen leveres med lukket impeller, halvåben eller åben impeller.
- Kapacitet max 120m³/h.

■ *The pumps are used for pumping liquids up to 300cP. Depending on the product to be pumped, the pumps can be supplied with a closed impeller, a half open impeller or an open impeller.*

■ *Capacity max 120m³/h.*



CP/ZA-IGH - Selvansugende centrifugalpumpe / *CP/ZA-IGH - Self-priming centrifugal pump*

- Pumpen har samme egenskaber som type CP, men er selvansugende, hvilket gør den særlig egnet til at pumpe medier der indeholder luft og gasser.
- Kapacitet max 120m³/h ved max 9 bar.

■ *This pump type is an extension of the CP-program. It is characterized by its self priming capacities, which makes this pump type ideally suited for pumping liquids with enclosed air or gasses.*

■ *Capacity max 120m³/h at max 9 bar.*

ZA-IGH - Sidekanalspumpe i rustfrit stål / *ZA-IGH - Stainless steel side channel pump*

- Pumpen er selvansugende og fungerer efter væske ring-princippet, hvilket gør den egnet til medier indeholdende luft og gasser.
- Kapacitet max 60m³/h ved max 6 bar.

■ *These self priming pumps are functioning according to the liquid ring-principle which enables them to pump liquids with enclosed air or gasses.*

■ *Capacity max 60m³/h at max 6 bar.*



CP - Centrifugalpumper / CP - Centrifugal pumps

CP - AGF / CP - AGF

- Pomac CP-AGF programmet omfatter en række pumper af rustfrit stål, der egner sig til at pumpe kartofler, grøntsager og frugter, uden at beskadige dem.
 - Pumperne kan leveres med et 1-kanal eller 2-kanals pumpehjul. Pumpehjulet er monteret direkte på motorakslen, dette resulterer i et minimal udhæng og derved et kort byggemål. Pumpehjulet kan nemt fjernes uden at demontere pumpehuset.
 - Pumpehuset er forsynet med inspektions dæksler. Dette muliggør inspektion af det indre af pumpen uden forudgående demontering og adskillelse.
- The Pomac CP-AGF program comprises a range of stainless steel pumps, suited to pump potatoes, vegetables and fruits, without damaging them.*
- The pumps can be supplied with a 1-channel or a 2-channel impeller. The impeller hub is mounted directly to the motor shaft, this results in a minimal overhang and a short build. The impeller can easily be removed without dismantling the pump casing.*
- The pump casing is provided with inspection covers. This enables inspection of the interior of the pump without prior dismantling and disassembly.*



Specifikationer / Specifications:

- CP-AGF 500 (NW 100) Max. passage: 100 mm
 - CP-AGF 750 (NW 150) Max. passage: 150 mm
 - CP-AGF 1000 (NW 200) Max. passage: 200 mm
- CP-AGF 500 (NW 100) Max. sphere passage: 100 mm*
- CP-AGF 750 (NW 150) Max. sphere passage: 150 mm*
- CP-AGF 1000 (NW 200) Max. sphere passage: 200 mm*

IP - Flexible impeller pumpe / *IP - Flexible impeller pumps*

IP - Flexible impeller pumpe / *IP - Flexible impeller pumps*

■ Pumpe type IP er velegnet til pumpning af både rene og forurenede væsker, samt medier med en høj viskositet. Pumpen, som er selvansugende, leverer et konstant, ikke pulserende afgangstryk og pumperetning kan nemt ændres. Den simple konstruktion gør inspektion og rengøring meget nem. Impelleren er selvmørende og roterer med meget stor præcision

■ *Flexible impeller pumps are suitable for pumping clean- troubled- or high-viscose liquids. One of the main benefits is its dry self-priming capacity. The pumps give a constant, non-pulsating output, which can be reversed easily by changing the direction of rotation. Its simple construction makes cleaning and inspection of the pump very easy. The rubber impeller is self-lubricating and rotates in the pump casing without any axial and radial play.*

Specifikationer / *Specifications:*

- Designtryk op til max 45 mvs
- Kapacitet op til 30 m³/h.
- Viskositet max 10000cP
- Pumpehus fremstilles af Aisi 304 eller Aisi 316
- Impeller fremstilles af neopren, eller f.eks. NBR, EPDM
- Tilslutninger: union, clamps, flanger
- Akseltætning: Mekanisk tætning i h.t. DIN 24960 eller ved anvendelse af V-ring med akselglider.

- *Working pressure up to max 45 mwk*
- *Flow: up to 30 m³/h*
- *Viscosity max 10000cP*
- *Pump head made of Aisi 304 or Aisi 316*
- *Impeller made of neoprene or NBR, EPDM*
- *Connections: union, clamps, flanges*
- *The shaft is sealed by means of a mechanical seal according to DIN 24960 or by means of a V-sealing ring with shaft sleeve.*



Anvendelsesmuligheder

Drikkevare:

- Vin, spiritus, likør
- Øl, urt, gær
- Mælk, fløde, yoghurt, valle
- Frugt- og grøntsagsjuice, koncentrat, eddike

Fødevarer:

- Eddike, mayonnaise, sennep, gelé, syltetøj, chokolade, honing, sukkeropløsning, is
- Rensevæsker, spildevand

Spildevandsrensning:

- Slam
- Kloak
- Natrium hydroxid

Kemisk industri:

- Syrer, alkalier
- Råmasser, trykfarver
- Opløsningsmidler, detergenter
- Lak, lim, køle væsker
- Salt opløsninger osv.

Applications:

Beverage industry:

- Wine, spirits, liquors
- Beer, wort, yeast
- Milk, cream, yoghurt, whey
- Fruit and vegetable juices, concentrates, vinegar

Food industry:

- Vinegar, mayonnaise, mustard, jelly Jam, fruit jelly, chocolate, honey, sugar solution, ice cream
- Cleaning liquids, waste water

Waste water treatment:

- Slurries
- Sewage
- Natrium hydroxide

Chemical industry:

- Acids, alkalis
- Pastes, inks
- Solvents, detergents
- Varnish, glue, cooling agent
- Salt solutions, etc.



Fittings /
Fittings



Ventiler /
Valve



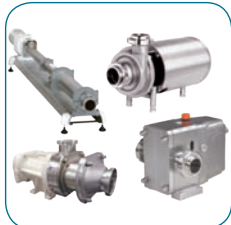
Tankudstyr /
Tank Equipment



Slanger /
Hoses



Flow komponenter /
Flow components



Pumper /
Pumps



Varmevekslere /
Heat exchangers



Røreværker /
Mixer



Andre produkter /
Other products

Scanding leverer rustfrit procesudstyr primært til levnedsmiddel-, pharmaceutisk- og kemisk industri

*Scanding offers corrosion-proof process equipment
primarily for food, pharmaceutical and chemical industries.*

Scanding blev grundlagt i 1992 af ingeniør Palle Müller-Hansen, dels som en rådgivningsvirksomhed og dels som agenturvirksomhed med salg af komponenter indenfor den rustfrie sanitære branche. I dag er vort kerneområde udelukkende salg af rustfrit proces-udstyr til den sanitære og aseptiske branche, f.eks. til hele levnedsmiddelbranchen samt til den pharmaceutiske- og kemiske industri.

Scanding's dynamiske medarbejdere arbejder ud fra princippet:

"Effektiv sparring - Produktivt samarbejde"

Dette er ikke kun et slogan for os, men bliver praktiseret via en klar salgspolitik, vor tilpasningevne og fleksibilitet, samt vor konstante fornyelse og fortsatte udvikling. Vore specialister står dagligt til rådighed med gode råd og vejledning vedrørende vort omfattende produktprogram. De kender produkterne, og kan se deres anvendelighed.

Af og til sker det, at vi i forbindelse med rådgivning til en kunde, må tilbyde et produkt, som ikke hører hjemme i vort standard program. Dette er ingen hindring, netop fordi vi sætter kunden i fokus, og derfor ønsker at finde den optimale løsning. Gennem vort store internationale netværk, skaffer vi varerne i de rigtige specifikationer, samt til en bedste pris og leveringstid. Hver eneste dag er vi på farten, overalt i landet – klar til omgående at besøge Dem, når der er behov for det.

Vort store centrallager og integrerede Edb-styring betyder, at ordrebehandling og lagerstyring sker sikkert og hurtigt, normalt med levering fra dag-til-dag. Vi kan altid checke den aktuelle lagerbeholdning, allerede under den indledende telefonsamtale, og dermed give kunden den bedst mulige vejledning. Alle forsendelser bliver dobbeltchecket, for derved at minimere eventuelle fejllieferancer.

Scanding was founded in 1992 by engineer Palle Müller-Hansen. Originally, it was an agency business including sales of components within the corrosion-proof sanitary industry, likewise offering consulting services. Today our core activity is exclusively sale of corrosion-proof process equipment for sanitary and aseptic industries, such as all food industries as well as pharmaceutical and chemical industries.

Scanding's dynamic employees act on the principle:

"Powerful coaching - Productive cooperation"

To us, this is not just a slogan. It is put into practice via an evident marketing policy, our adaptability and flexibility, as well as our constant renewal and continuous development. Our experts are daily at your service with advice and guidance of our extensive product programme. They know the products and have an eye for their suitability.

When assisting our customers, it may happen, from time to time, that we have to offer a product, which is not included in our own standard programme. This is no problem, however, because we focus on our customer and consequently, try to provide the optimum solution. We supply the right specifications of the articles in question through our large, international networks, at the best price and time of delivery. Every day we are on our way all over the country – ready to visit you, whenever you need.

Our great Central Warehouse and the Integrated Computer management means that order processing and stock management is done safely and quickly, usually with next day delivery. We can always check the current stock during the initial telephone conversation, and thereby give the client the best possible guidance. All shipments are double checked in order to minimize any errors supplies.

Scanding

FLOW TECHNOLOGY AND EQUIPMENT

Scanding A/S • Djursgade 31 • DK-8500 Grenaa

Tel.: +45 8759 2222 • Fax: +45 8759 2223

scanding@scanding.dk • www.scanding.dk